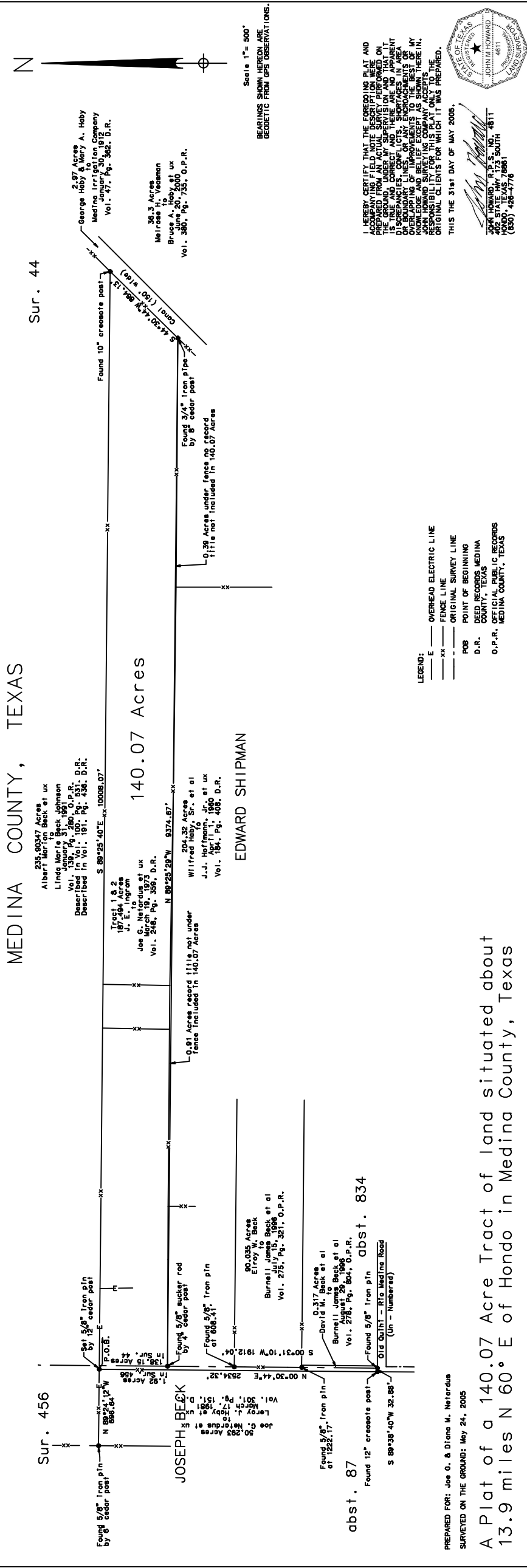


MEDINA COUNTY, TEXAS



Sur. 456

Sur. 44

140.07 Acres

JOSEPH BECK

EDWARD SHIPMAN

Scale 1" = 500'

BEARINGS SHOWN HEREON ARE GEODETIC FROM GPS OBSERVATIONS.

- LEGEND:
- E — OVERHEAD ELECTRIC LINE
 - F — FENCE LINE
 - XX — ORIGINAL SURVEY LINE
 - POB — POINT OF BEGINNING
 - D.R. — DEED RECORDS, MEDINA COUNTY, TEXAS
 - O.P.R. — OFFICIAL PUBLIC RECORDS, MEDINA COUNTY, TEXAS

PREPARED FOR: Joe G. & Diana M. Neffardus
 SURVEYED ON THE GROUND: May 24, 2005

A Plat of a 140.07 Acre Tract of land situated about
 13.9 miles N 60° E of Hondo in Medina County, Texas

I HEREBY CERTIFY THAT THE FOREGOING PLAT AND BEARINGS SHOWN HEREON ARE GEODETIC FROM GPS OBSERVATIONS. THIS THE 31st DAY OF MAY 2005.



JOHN HOWARD, P.E.S., NO. 4611
 MEDINA COUNTY, TEXAS
 (800) 428-4776